



BUSINESS PROFILE



OPTIMWAY

ABOUT US



Optimway is an IT Service Provider and IT service Integrator, Optimway who start business development on 2017 to start point of IT solutions for new target in Egyptian market.

SOME OF CHANGE BIG OF LIFE

MISSION



We are tracking to assist IT staff and other employees in optimizing their work Processes to Be Complete they Data Center or organizations to be More Safe and More Secure to Working Longwear Stable.

VISION



We as IT's solutions team, tracking the technology of products and platforms to be always support difficulty challenge in organizations.

VALUES



- Be honest.
- Working smart.
- Value teamwork with sharing information and knowledge.
- On time as we claim.

OUR TEAM



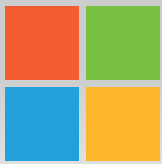
Optimway's technical team is a group of highly skilled and experienced IT professionals who are dedicated to providing innovative and reliable IT solutions to clients. The team has a deep understanding of a wide range of technologies, including cloud computing, networking, security, and software development. They are also proficient in a variety of programming languages and tools.

OUR SERVICES



IT Helpdesk	Network solution	Cloud solution	Security solution
Cyber security	Backup solution	Hosting solution	Hardware maintenance





Microsoft

www.microsoft.com



	Microsoft 365 Apps for business	Microsoft 365 Business Standard	Microsoft 365 Business Premium	Microsoft 365 Business Basic
Teamwork and communication		✓	✓	✓
Web and mobile versions of Ms 365 apps	✓	✓	✓	✓
Email and calendaring		✓	✓	✓
File storage and sharing	✓	✓	✓	✓
Security and compliance	✓	✓	✓	✓
Support and deployment	✓	✓	✓	✓
Tools to build and manage your business	✓		✓	✓
Desktop versions of Ms 365 apps for PC and Mac	✓		✓	✓
Advanced threat protection				✓
PC and mobile device management				✓

✓ Partially included

✓ Included



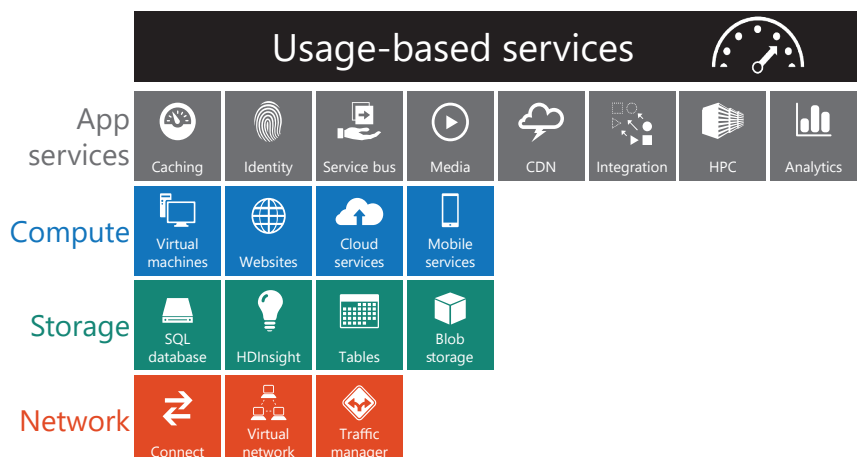
An open and flexible cloud platform that enables you to quickly build, deploy, and manage solutions across a global network of Microsoft-managed datacenters.

Build applications using any language, tool, or framework

Integrate public cloud solution with the existing IT environment

99.95% monthly SLA

Automatic OS and service patching



SOPHOS



www.sophos.com



Sophos Endpoint

- ✓ EDR and XDR
- ✓ Anti-ransomware technology
- ✓ Deep learning
- ✓ Exploit prevention
- ✓ Active adversary mitigations
- ✓ Zero trust network access (ZTNA)
- ✓ Centralized management

Sophos Firewall

- ✓ Desktop and rack-mounted options available
- ✓ Centralized management
- ✓ Powerful performance
- ✓ Deep learning
- ✓ Unmatched network visibility
- ✓ Deep packet inspection
- ✓ Accelerated applications
- ✓ High-speed connectivity

Model		Tech.Specs				Throughput				
	Revision #	Form Factor	Ports/Slots (Max Ports)	w-model	Swappable Components	Firewall (Mbps)	IPsec VPN (Mbps)	NGFW (Mbps)	Threat Protection (Mbps)	Xstream SSL (Mbps)
XG 86[w]	1	desktop	4	Wi-Fi 5	n/a	3,100	225	350	145	75
XG 106[w]	1	desktop	4	Wi-Fi 5	opt. ext. Power	3,550	330	400	150	75
XG 115(w)	3	desktop	4	Wi-Fi5	opt. ext. Power	4,000	560	1,000	375	130
XG 125(w)	3	desktop	9/1 (9)	Wi-Fi5	opt. ext. Power, 3G/4G	7,000	1,500	1,275	400	170
XG 135[w]	3	desktop	9/1 (9)	Wi-Fi5	opt. ext. Power, 3G/4G, Wi-Fi**	7,500	1,700	1,800	600	210
XG 210	3	1U	8/1 (16)	n/a	opt. ext. Power	29,000	1,920	3,200	800	230
XG 230	2	1U	8/1 (16)	n/a	opt. ext. Power	32,000	2,100	4,500	1,000	280
XG 310	2	1U	12/1 (20)	n/a	opt. ext. Power	35,000	3,050	5,300	1,550	370
XG 330	2	1U	12/1 (20)	n/a	opt. ext. Power	38,000	3,940	9,300	2,100	560
XG 430	2	1U	10/2 (26)	n/a	opt. ext. Power	55,000	5,000	10,000	2,200	600
XG 450	2	1U	10/2 (26)	n/a	opt. int. Power	65,000	6,100	13,900	3,400	770
XG 550	2	2U	8/4 (32)	n/a	Power, SSD, Fan	75,000	8,500	15,300	6,000	1,000
XG 650	2	2U	8/6 (48)	n/a	Power, SSD, Fan	85,000	9,000	18,000	7,700	1,350
XG 750	2	2U	8/8 [64]	n/a	Power, SSD, Fan	100,000	12,500	19,200	9,400	1,400

FORTINET



www.fortinet.com

The Fortinet Advantage



Security Processors

Superior NGFW and SD-WAN performance and efficiency



FortiOS

Ties all the Security Fabric's security and networking components together



Security Fabric

Organically developed, highly integrated and automated cybersecurity platform



Ecosystem

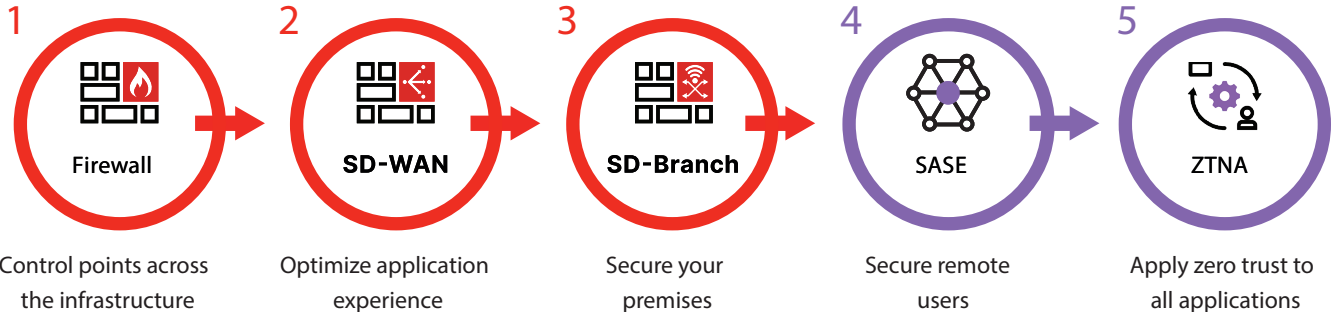
300+ partners
500+ integrations



The Secure Networking Journey

The convergence of networking and security across WLAN, LAN, SD-WAN, ZTNA, SASE, and network firewall enables networking that is location, user, device, content, and application aware.

DEM NOC AIOps



The Fortinet Security Fabric

The Fortinet Security Fabric is at the heart of the Fortinet security strategy. It is a platform organically built around a common operating system and management framework to enable broad visibility, seamless integration and interoperability between critical security elements, and granular control and automation.

Broad

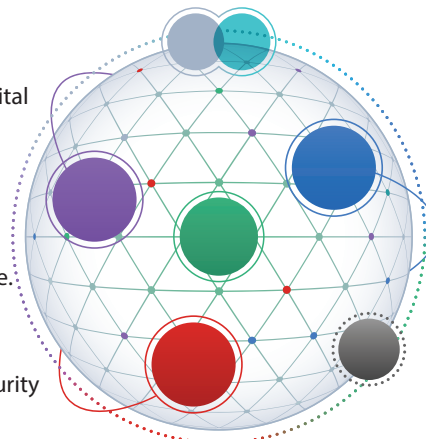
visibility and protection of the entire digital attack surface to better manage risk.

Integrated

solution that reduces management complexity and shares threat intelligence.

Automated

self-healing networks with AI-driven security for fast and efficient operations.



Pledge: Reach Net Zero

GHG emissions by 2030 across Fortinet's owned offices, facilities, and data centers.

FY22 Impact

%88

less power consumption over industry standard CPU

%66

average reduction on product energy consumption

%33

reduction in space occupation

boxes shipped with %100 biodegradable packaging

kaspersky



www.kaspersky.com

KasperskyEndpoint Security for Business

Enterprise-grade endpoint protection

Next-gen adaptive protection from cyber threats

- ✓ Protects every endpoint without breaking the bank
- ✓ Streamlines centralized security management with a cloud or web console
- ✓ Minimize the number of incidents by automated processing

Kaspersky Endpoint Security for Business



Endpoint Security for Business Select

Protection and integration

Unified Endpoint Management, ML-driven threat protection for Windows, Linux, Mac, Android, iOS and integration with EDR



Endpoint Security for Business Advanced

Everything in Select, plus extended protection for application servers



Total Security for Business

Everything in Advanced, plus Web and email traffic protection at gateway level

Application, Web & Device Controls

Cloud-enabled controls for policy refinement and breach prevention

Everything in Select, plus anomaly behavior detection for PCs and controls for servers

Everything in Advanced, plus traffic and Web controls at gateway level

Advanced tasks automation

–

Enables security delegation, patching and encryption management

Everything in Advanced, plus streamlining of Web and email gateway configuration

Anti-spam protection

–

Delivers instant protection from spam

EDR feature set

Add-on provides dynamic threat emulation, Automatic IoC generation, and more

Add-on provides dynamic threat emulation, Automatic IoC generation, and more

Add-on provides dynamic threat emulation, Automatic IoC generation, and more



Kaspersky Security Foundations



Kaspersky Endpoint Security for Business



Kaspersky Security for Mail Server

Protection for corporate users and mobile devices



Kaspersky Hybrid Cloud Security



Kaspersky Security for Internet Gateway

Server security for hybrid environments
Protection for Virtual Desktops (VDI)
Protection for specialized endpoints and legacy PCs



Kaspersky Embedded System Security



Kaspersky Professional Services

Protection against the most common attack vector – email
Forefront protection against web-based threats



Kaspersky Security for Storage



Kaspersky Premium Support and Professional Services

Deployment, configuration and maintenance assistance

- ✓ File, web, network and mail threat protection
- ✓ Protection for Workstations, Servers and mobile devices
- Behavior Detection
- ✓ Ransomware, exploit prevention and remediation
- Access to Kaspersky Security Network (KSN)
- Cloud or on-prem management console
- Application control for workstations
- Web and Device control
- Remote data wipe
- Vulnerability Assessment
- Mobile Device Management
- Events export via Syslog
- EDR and cloud sandbox integration

Select
Endpoint Security for Business

- Role-based access control
- Application control for servers
- Patch management
- Adaptive Anomaly Control
- Encryption management (file, disk and device level)
- HW & SW inventory
- OS and third-party installation
- Automatic export to SIEM (CEF and LEFF support)

Advanced
Endpoint Security for Business

- Protects email and web traffic at gateway level
- Advanced anti-phishing
- Reputational filtering and malicious address detection
- Anti-spam and content filtering
- Business Email Compromise (BEC) detection
- Protection for Microsoft Office 365 services

Total
Security for Business



www.eset.com

	eset PROTECT ENTRY	eset PROTECT ADVANCED	eset PROTECT ENTERPRISE	eset PROTECT MDR
	Modern multilayered endpoint protection featuring strong machine learning and easy-to-use management	Best-in-class endpoint protection against ransomware & zero-day threats, backed by powerful data security	Extended detection and Response (XDR) that delivers enterprise-grade visibility, threat hunting and response options	Airtight protection of your IT environment, with cyber risk management and world-class ESET expertise on call
Console	✓	✓	✓	✓
Modern Endpoint Protection	✓	✓	✓	✓
File Server Security	✓	✓	✓	✓
Full Disk Encryption	✗	✓	✓	✓
Advanced Threat Defense	✗	✓	✓	✓
Detection and Response	✗	✗	✓	✓
MDR Service	✗	✗	+	✓
Deployment and Upgrade	+	+	+	✓
Premium Support Advanced	+	+	+	✓
Cloud App Protection	+	+	+	+
Mail Security	+	+	+	+
Threat Intelligence	+	+	+	+

ESET PROTECT Complete components

Includes ESET Endpoint Security
Endpoint Protection

Advanced multilayered protection for computers, smartphones and virtual machines.

Includes ESET Server Security

Real-time protection for your company's data passing through all general servers.

Includes ESET Full Disk Encryption
Full Disk Encryption

Robust encryption solution for system disks, partitions or entire devices to achieve legal compliance.

Includes ESET PROTECT
Management Console

Unified security management platform providing superior network visibility, available as cloud or on-premises management.

Includes ESET LiveGuard Advanced
Advanced Threat Defense

Proactive cloud-based defense against zero-day and never-before-seen threat types.

Includes ESET Mail Security
Includes ESET Mail Security

Blocks all spam and malware at server level, before they reach users' mailboxes.

Includes ESET Cloud Office Security
Cloud app Protection

Advanced protection for Microsoft 365 apps, with added proactive threat defense. Dedicated console included.

safetica



www.safetica.com

One solution.



Data classification & data-flow audit

Discover and classify valuable data, audit all sensitive data activities anywhere to report and investigate where there's a risk of leakage or theft.



Sensitive and confidential data protection

Protect sensitive business- or customer-related data, source codes, or blueprints from accidental or intentional leakage.



Insider threat detection and response

Get your hybrid digital workspace under control, discover unwanted software and hardware, analyze behavior to detect and audit high-risk employees.

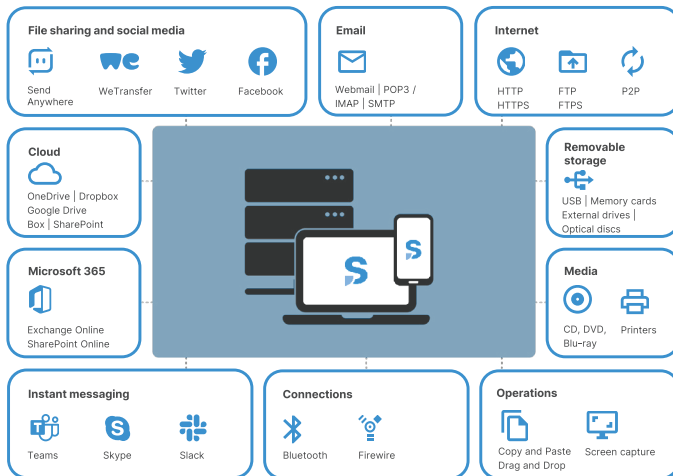


Regulatory compliance support

Set policies to support your compliance with GDPR, HIPAA, PCI-DSS, ISO 27001, and other regulations and data protection standards.

Data channels covered

Safetica keeps data protected across a multitude of channels and platforms, ensuring your data is secure wherever it resides or flows.



One solution

Three choices.

Safetica ONE Discovery

Identify sensitive information and security risks

Understand sensitive data flow and classify your data. Get security &

Safetica ONE Protection

Eliminate the risk of losing sensitive information

Secure your sensitive data with Dynamic Data Loss Prevention (DLP) and Insider Threat Protection.

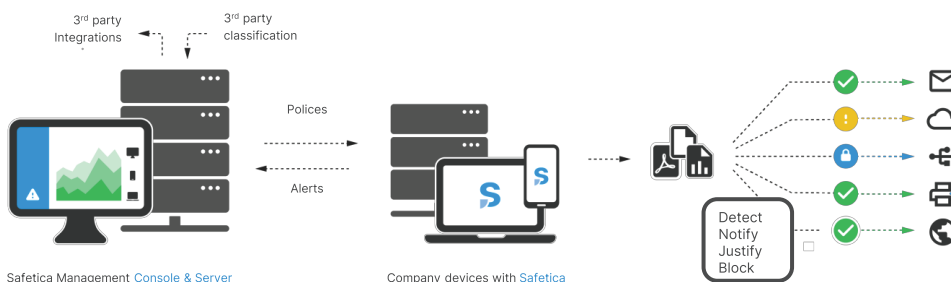
Safetica ONE Enterprise

Protect your assets in complex environments

Integrate with your security stack and multi-domain environments.



Reference Architecture



Safetica Management Console & Server

The physical or virtual server runs a database with endpoint activity and security records. The Safetica Management Console enables admins to manage security policies and display the collected information.

Company devices with Safetica

All actions are recorded, and security policies are applied on desktops, laptops, and other remote or even offline devices with a Safetica Client.

Sensitive data is protected throughout all channels.

Technology alliances



Integrated with ESET and Fortigate

Yealink



www.yealink.com

Yealink is a global-leading provider of Unified Communication & Collaboration Solutions specialized in video conferencing, voice communications, and collaboration, dedicated to helping every person and organization embrace the power of "Easy Collaboration, High Productivity". With best-in-class quality, innovative technology, and user-friendly experiences, Yealink is one of the best providers in more than 140 countries and regions, ranks No.1 in the global market share of IP Phone, and is the Top 5 leader in the video conferencing market





My PBX

HYbrid IP-PBX for Your Business

Easy to use

Easy to deploy and manage via Web-based configuration interface

Robust all-in-one features

Deliver enterprise-class communication features and functionality to SMBs

Modular technology

Customizable combination of FXO, FXS, BRI, GSM/CDMA, and UMTS (WCDMA) modules

Match your IP phone

Perfect interoperability with major IP Phones

Speak your language

Multiple languages Web GUI and voice prompts

No future licensing fees

Expand your system to maximum capacity without license fees

Users	SOHO	Standard	U100	U200	U300	U500/U510/U520
Items	32	100	100	200	300	500
Concurrent Calls (Max)	15	25	25	50	50	80
Voicemail	3000 min	3000 min	-	Default 3000 min (upgradable)	-	-
Hard Disk	-	-	-	-	-	Support 2.5 inch SATA2
USB	1	1	1	1	1	1
Analog Ports (Max)	4	16	16	16	2	16
GSM/CDMA Ports (Max)	-	8	8	8	-	8
UMTS Ports (Max)	-	8	8	8	-	8
BRI Ports (Max)	4	8	8	8	-	8
E1/T1/J1	-	-	-	-	1	0/1/2
Network Interface			LAN 1(10/100Mbps)	WAN 1(10/100Mbps)		1(10/100/1000Mbps)
Protocol					SIP(RFC3261), IAX2	
Transport Protocol					UDP, TCP, TLS, SRTP	
Management Protocol	-	-	TR-069	TR-069	TR-069	TR-069
Audio Codec			G.711 (alaw/ulaw), G.722, G.726, G.729A, GSM, SPEEX, ADPCM			
Video Codec			H.261, H.263, H.263P, H.264, MPEG4			
DTMF			Inband, RFC2833, SIP INFO			
Connection Type			Static IP, PPPoE, DHCP, OpenVPN			
Others			Firewall, VLAN, DDNS, QoS, DHCP Server			
Recording	One Touch Record (Manual)	Support	Support	Support	Support	Support
	Call Recording (Auto)	-	On demand	On demand	On demand	By default
Redundancy		Support	Support	Support	Support	Support
MyTwins	Support	Support	Support	Support	Support	Support
Audio In/Out		-	Support	Support	Support	-
Call Back	Support	Support	Support	Support	Support	Support
FAX (T.38)	Support	Support	Support	Support	Support	Support
SMS to Mail/Mail to SMS	-	Support	Support	Support	-	Support
Add-ons	-	-	Support	Support	Support	Support

SOHO



Standard



TB Series



TA Series



TE Series



TG Series



U Series

MyPBX U Series delivers a comprehensive suite of telephony features and functionalities for small and medium sized business. Engineered to support up to 500 users and as many as 80 concurrent calls, MyPBX U Series boasts expandability flexibility, and affordability.



U100

- 100 Users
- 25 Concurrent Calls
- Up to 16 FXS/FXO Ports
- Up to 8 BRI Ports
- Up to 8 GSM/CDMA/UMTS Channels



U200

- 200 Users
- 50 Concurrent Calls
- Up to 16 FXS/FXO Ports
- Up to 8 BRI Ports
- Up to 8 GSM/CDMA/UMTS Channels

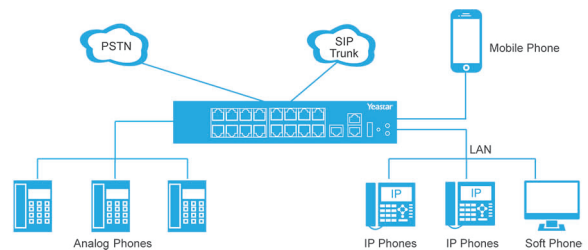


U300

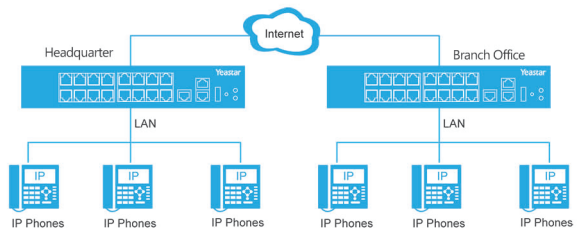
- 300 Users
- 50 Concurrent Calls
- 1 E1/T1/PRI Port
- 2 FXS Ports

MyPBX CAN BE TAILORED TO YOUR REQUIREMENTS

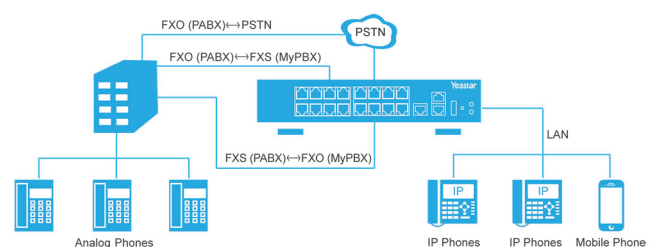
• VOIP SOLUTION FOR SMBs



• MULTI-SITE & BRANCH OFFICES



• COMBINE MYPBX WITH EXISTING TRADITIONAL PBX



*astTECS



www.asttech.com

KEY FEATURES

VIDEO CALLING



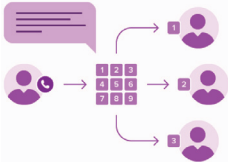
SMART PHONE WITH Wifi CLIENT



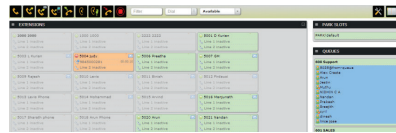
AUDIO CONFERENCE BRIDGING



INTERACTIVE VOICE RESPONSE (IVR)



WEB-BASED RECEPTIONIST CONSOLE



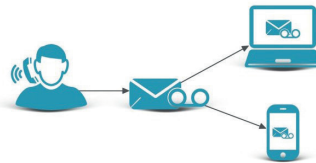
VOICE LOGGER



DISTRIBUTED OFFICE SETUP



VOICE MAIL TO EMAIL



THIRD PARTY SOFTWARE INTEGRATION



Product Bundle

Models

Components	e25	e50	e100	e200	e300	e500	e1000
FXO (Analog)	Optional	Optional	Optional	Optional	Optional	Optional	Optional
PRI (ISDN)	1	1	1	2	2	3	4
IP Extension (SIP)	25	50	100	200	300	500	1000
FXS (Analog)	Optional	Optional	Optional	Optional	Optional	Optional	Optional
Trunk Calls	5	10	30	45	60	90	120
SIP Trunks	5	10	30	45	60	90	120
Hosted Solution	Supported	Supported	Supported	Supported	Supported	Supported	Supported
Web Call	Supported	Supported	Supported	Supported	Supported	Supported	Supported
VoIP Services	Available	Available	Available	Available	Available	Available	Available

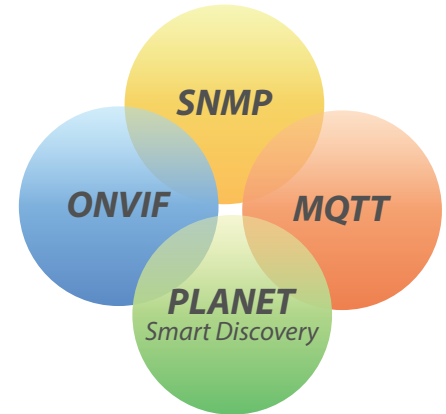
Models

Components	e25	e50	e100	e200	e300	e500	e1000
Power	NA	NA	Optional	Optional	Optional	Optional	Optional
Failover	NA	NA	Optional	Optional	Optional	Optional	Optional
Interface (PRI)	NA	NA	Optional	Optional	Optional	Optional	Optional
Hard Disk	NA	NA	Optional	Optional	Optional	Optional	Optional



Smart Central Management Over All Network Devices

PLANET Network Management System (NMS) Solution successfully integrates MQTT, SNMP, ONVIF protocol and PLANET Smart Discovery to enable IT administrators to monitor and further manage up to 10 types of networking devices, covering switches, routers, VoIP, IP Surveillance devices and more.



Utilizing PLANET Routers and Gateway to Create a Safe Network

PLANET has incorporated the latest 5G technology and Wi-Fi 6 and security functions into its Wireless VPN Security Router Series and Industrial 5G NR Security Gateway Series to help users flexibly deploy their networks with enhanced transmission performance and better security.



VR-100

VR-300 Series

ICG-2515W-NR

IVR-100

IVR-300(W)

Enterprise

Industrial



Layer -24 3Port 10G SFP+ + -4Port 100G QSFP28 Managed Switch

PLANET XGS24-6350-X4C is a high performance Layer 3 Managed Switch that meets the next generation Metro, Data Center, Campus and Enterprise network requirements. It has high-density 10 24G SFP+ and 40 4G/100GbE QSFP28 fiber interfaces delivered in a 1RU rugged case.



Layer -24 +2Port 10G SFP+ + -2Port 40G QSFP+ Stackable Managed Switch

PLANET XGS24-5240-X2QR is a high performance Layer +2 Stackable Managed Switch that meets the next generation Metro, Data Center, Campus and Enterprise network requirements. It supports IPv4/IPv6 Layer 3 static routing capability and abundant L2/L4 switching engine, and provides high-density 10 24G SFP+ and 40 2G QSFP+ fiber interfaces delivered in a 1U rugged case. Up to 4 switches with a total of 10 96G SFP+ slots can be stacked up, making the management of a high-capacity network and all-purpose applications easier and more flexible.



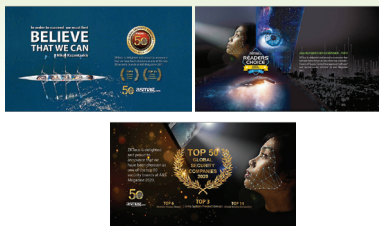
10GBASE-LR/SR/BX/T Modules

The PLANET MTB family of 10G SFP+ fiber optic module that is designed to work with PLANET products with 10G SFP+ interface provides a high-performance 10G Ethernet network for enterprises, telecoms and ISPs. The MTB family is also well applicable for data center cloud computing. The deployment distance can be extended from 300 meters (multi-mode, LC), to up to 60 kilometers (single-mode, LC).



Industrial L-8 3Port 1000/100/10T 802.3bt PoE + -2Port 1G/2.5G SFP + -2Port 10G SFP+ Managed Ethernet Switch

With EN 2-6-61000 and 4-6-61000 Heavy Industrial EMC and railway EN 4-50121 certified design, and complying with the IEEE 802.3bt PoE++ technology, PLANET IGS8-6329-UP2S2X provides non-stop data communication and reliable PoE injection, even with noise interferences coming from the heavy industrial field applications.



KR601-E (Rfid)

Read 125KHz Proximity card (125KHz)
Wiegand output 26bit.
Dimension: 86*86*16mm.
IP65



ML10 (Smart lock)

Material Zinc Alloy
Support Finger and ID Card
User Capacity Admin -10
Normal User: 60, Temporary User: 20
Color: Silver x Black



SF101 (Fingerprint)

Fingerprint Capacity 200
ID card Capacity 100
Transaction Capacity 30,000
Communication RS232/485, USB-client
Access Control Interface 3rd party electric lock, door sensor, exit button, alarm, Door Bel



Time Attendance

LX50

Fingerprint Capacity: 500.
Record Capacity: 50,000
Communication: USB Host and client
USB Flash Format Fat 32
Other Functions: SSR Report,
2.8inch colorful display

K40 Pro

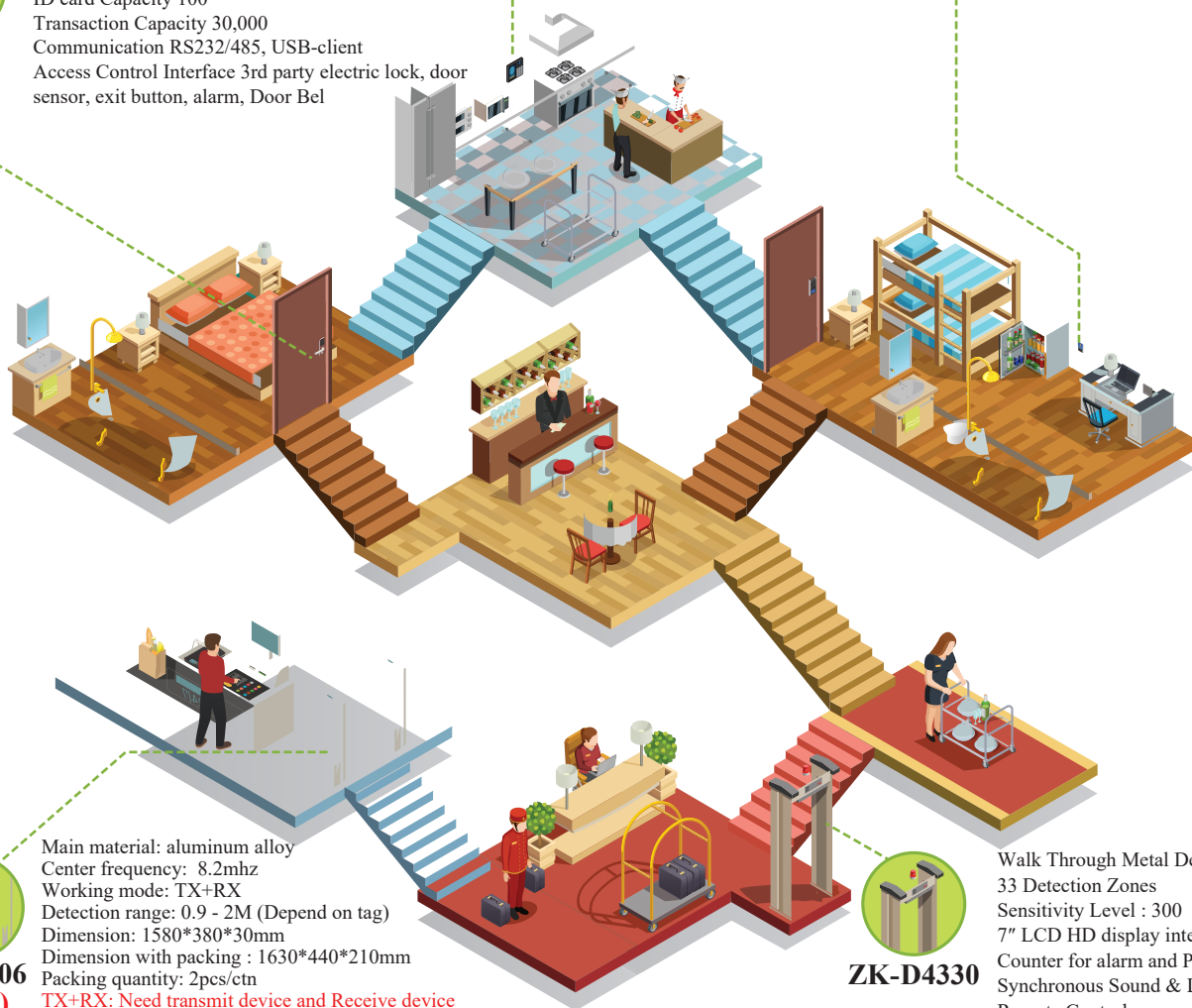
Fingerprint Capacity: 3000.
ID Card Capacity: 3,000
Record Capacity: 200,000
Display: 2.8 inch TFT screen
Communication: TCP/IP, USB Host
Other Functions: Built-in battery



Video Intercom

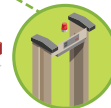
VDPO3-B3 KIT

7 inch TFT Color Monitor
2-way audio communication over analog network
Touch Button Embedded on Panel
Tenant Station:
Screen Resolution: 800*480
Speaker: Dual Speakers, 8Ω / 2W
Color: White
Entrance Station:
Camera: 1MP
Nighttime Visual Range: 0.2M - 1M
Color: Black
Water & Dust Proof: IP54



EAS-506 (Vice)

Main material: aluminum alloy
Center frequency: 8.2mhz
Working mode: TX+RX
Detection range: 0.9 - 2M (Depend on tag)
Dimension: 1580*380*30mm
Dimension with packing : 1630*440*210mm
Packing quantity: 2pcs/ctn
TX+RX: Need transmit device and Receive device to consist a system



ZK-D4330

Walk Through Metal Detector
33 Detection Zones
Sensitivity Level : 300
7" LCD HD display interface
Counter for alarm and People
Synchronous Sound & LED alarm
Remote Control

OUR PARTNERS



OPTIMWAY

SOPHOS



kaspersky



FORTINET



vmware

VEEAM



safetica



HIKVISION



Western Digital.



Lenovo

SAMSUNG

Yealink

QNAP



SUSE



AND
MORE...

OUR CUSTOMERS



OPTIMWAY

MICAVIT

EP GROUP

DMA
DAHAB MEDIA ACADEMY
Mohamed Abd El-Dahab

NEWTRAC TRADING

VENECIA
BLINDS

CREATIVE
TWINKLES

WAVE

اشتكس
ASHTECHS
POWER TRANSMISSION AND CONVEYOR BELTS

ELSOBKY
FOR AGENCIES IMPORT & EXPORT

ARCADENZA
ARCHITECTURE • INTERIOR DESIGN

Pelliconi

Rizkalla

APrivilege
البرت هارس و شركاه
المسعودي

TAHOUN
& ASSOCIATES

MASSOUD GROUP

BEMASA

NEW
Speeco
International Specialized Contracting Co.
لشركة الدولية للمقاولات المتخصصة

CARE

GULF ARABIAN COMPANY
G.A.C.

TOP PACK

IDSC
المؤسسة للم التنمية والاستشارات

Utopia

UIC
Solutions

المطري

AMAN
أمان

MASSA

Intraconsult
Industrial Services

ape

ELDEYAB

EGY
GRAPHICS

Bbeter
seidor

5M
E.M.A
EXPORT & IMPORT
COMMERCIAL AGENCIES

remark
solutions
remark your business
goods and services

R&E
recruitment
consultancy

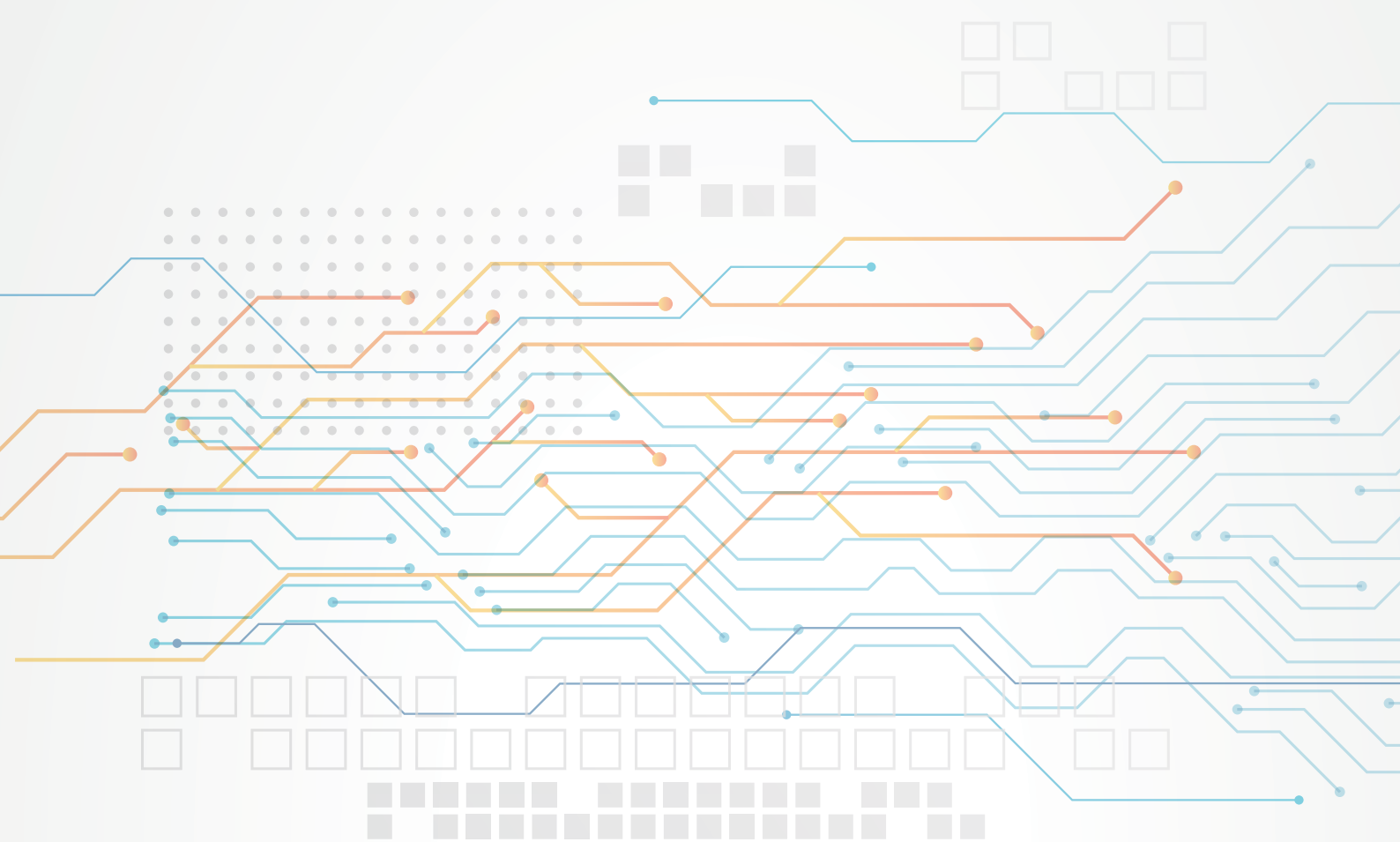
المستشفى الأمريكي
AMERICAN HOSPITAL

MERCURY

ELSOBKY
FOR AGENCIES IMPOT & EXPORT

IOAA
INTERNATIONAL
OFFICE

AND MORE CUSTOMERS



OPTIMWAY

SOME OF CHANGE BIG OF LIFE

📍 61, Nakhla Al Motieai, Nozha,
Cairo, Egypt

☎ +2 01017105041
☎ +2 01066822463

✉ info@optimway.com
🌐 www.optimway.com